

Self-Organisation



Michael Lafite

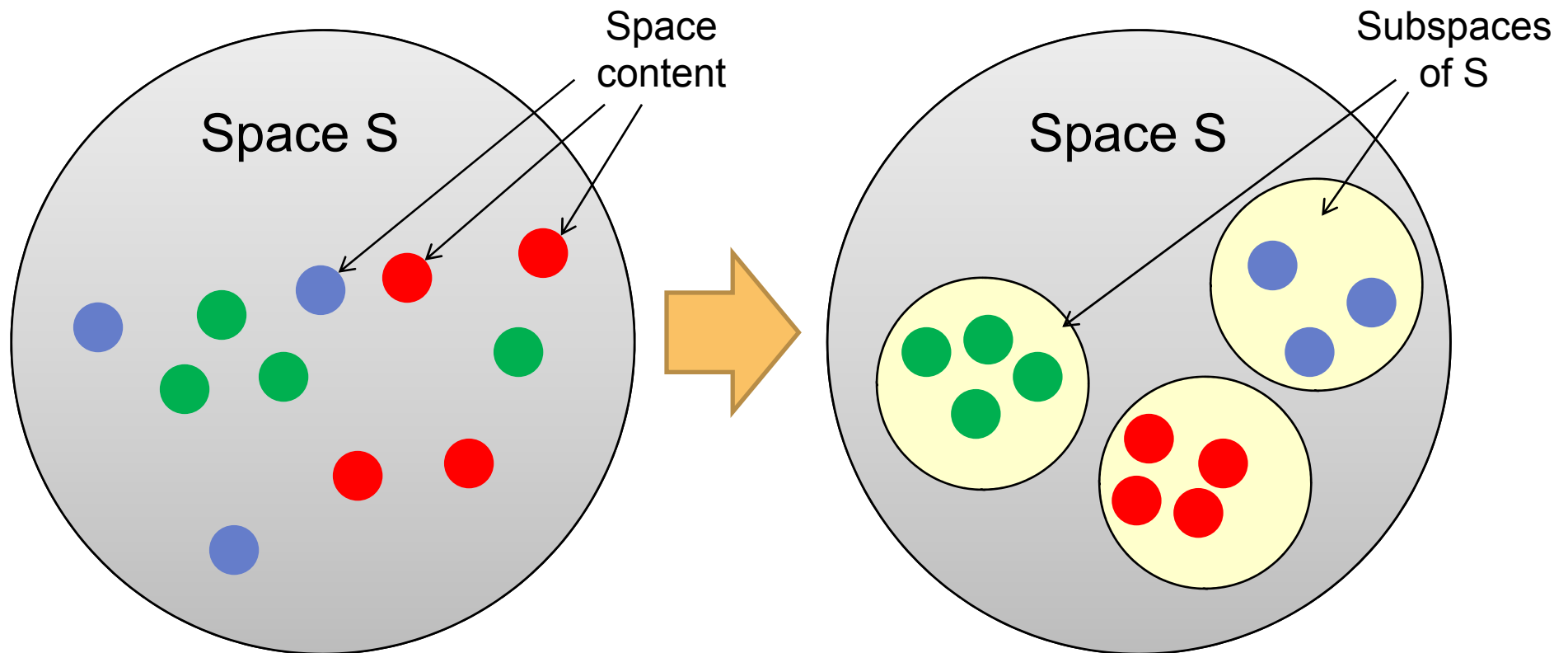
WP2 Session
Milano, 8-9 January 2009



- Important design changes since Helsinki
- New API methods
- Component interaction
- Monitoring and triggering
- Distribution strategy
- Discussion of open issues

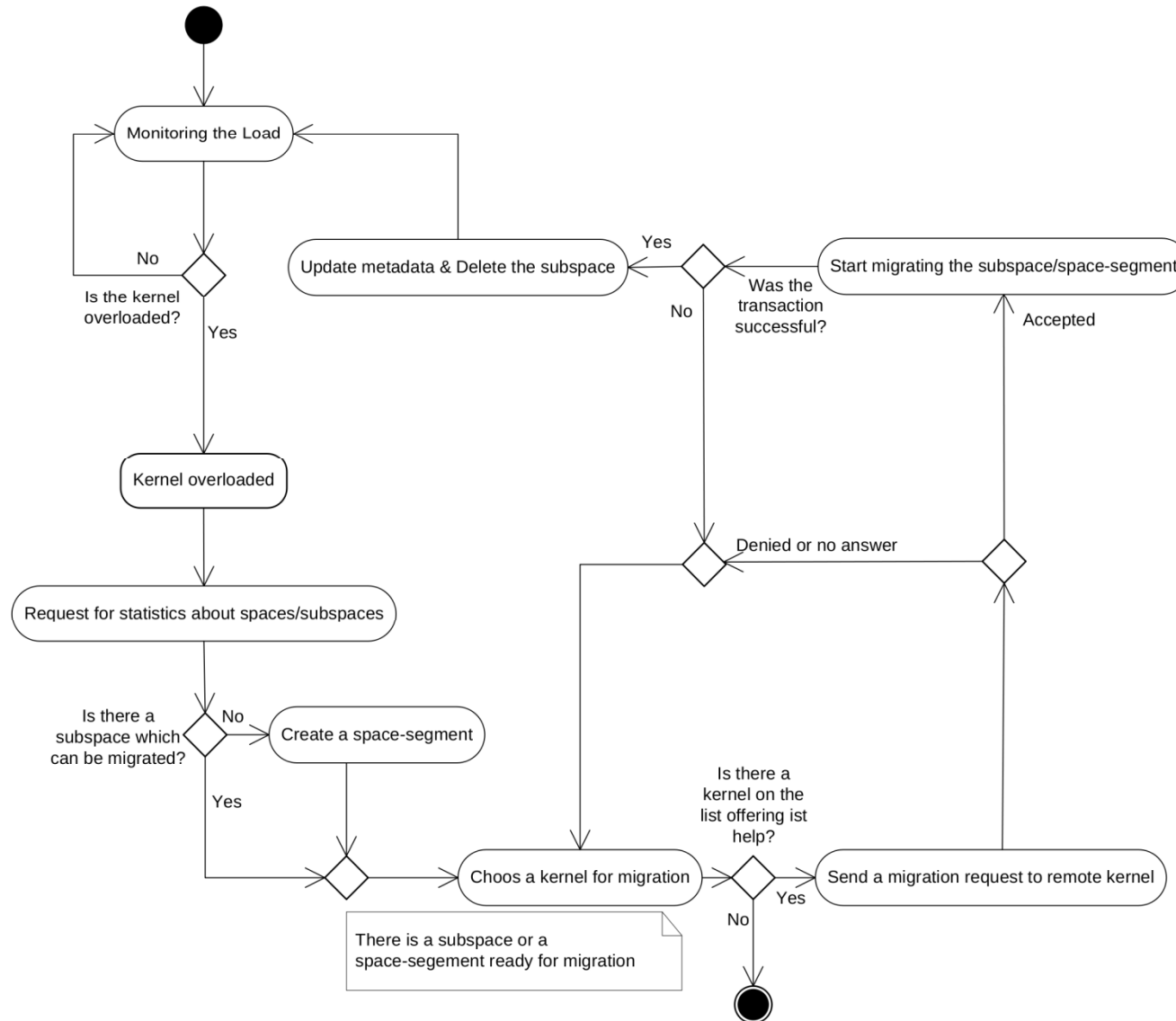
- Basic concept not changed:
 - Kernels monitor load and migrate load when they are overloaded.
 - Selection of data based on space statistics.
- New concept:
 - Migrate spaces instead of triples.
 - Create space-segments if required.

- Virtual subspaces that are hidden from the client
 - → for the client the data is still in the same space.
- Created when required.

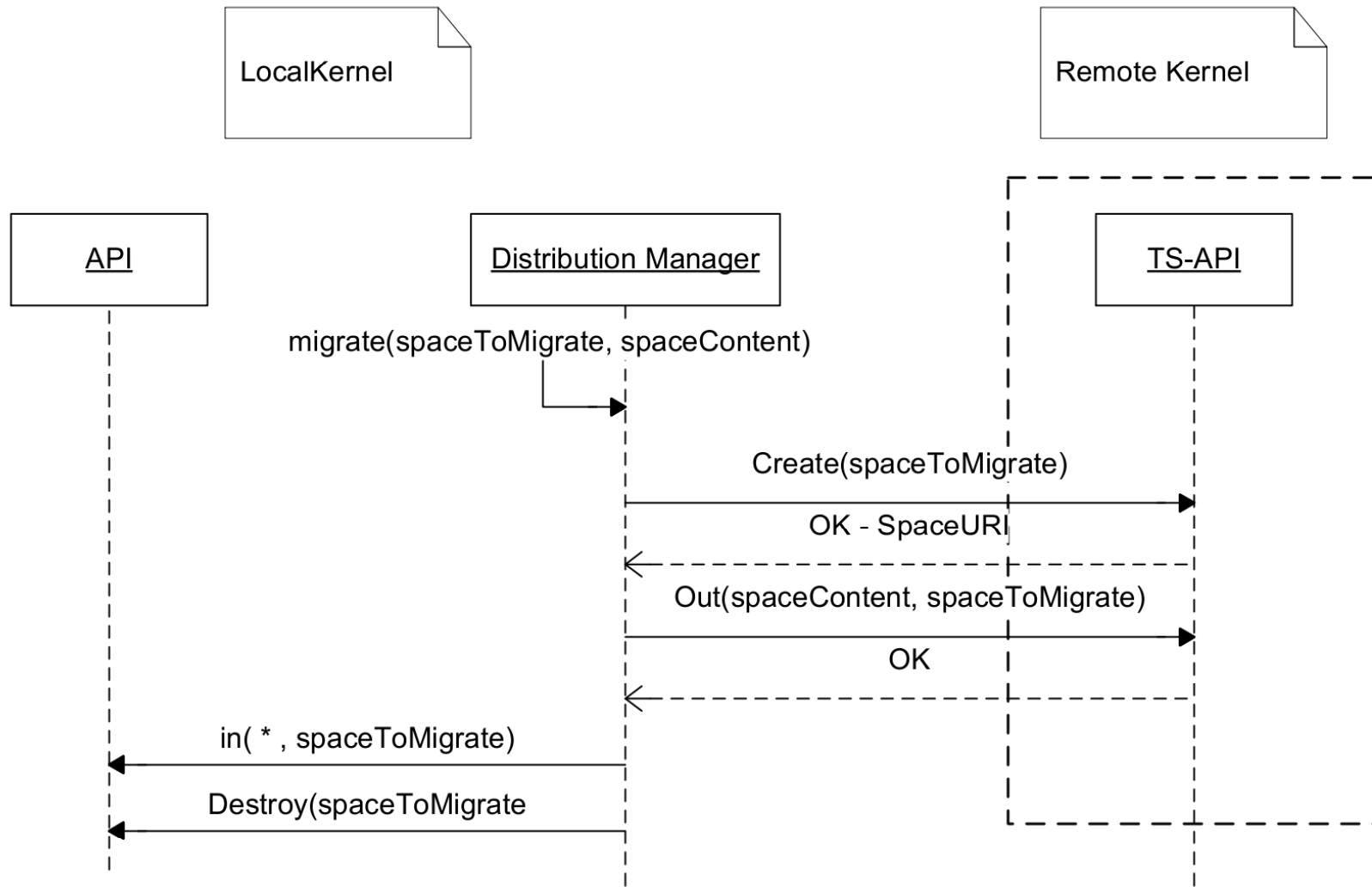


- `boolean migrationRequest(long triplenumbrer)`
 - Ask remote kernels whether they can accept additional load.
- `boolean migrate(SpaceURI spaceToMigrate, Set<Statement> spaceContent)`
 - Migrate the space to the remote kernel

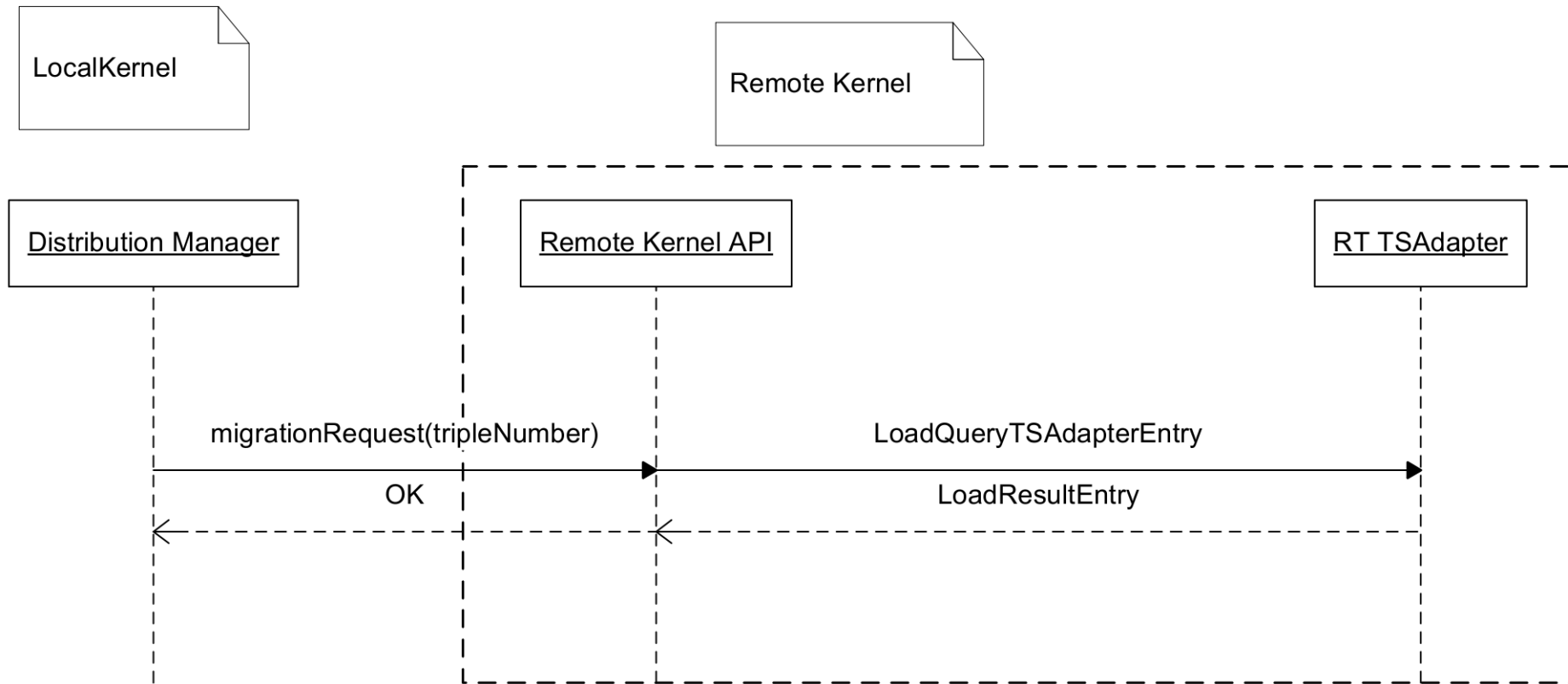
Activity diagram



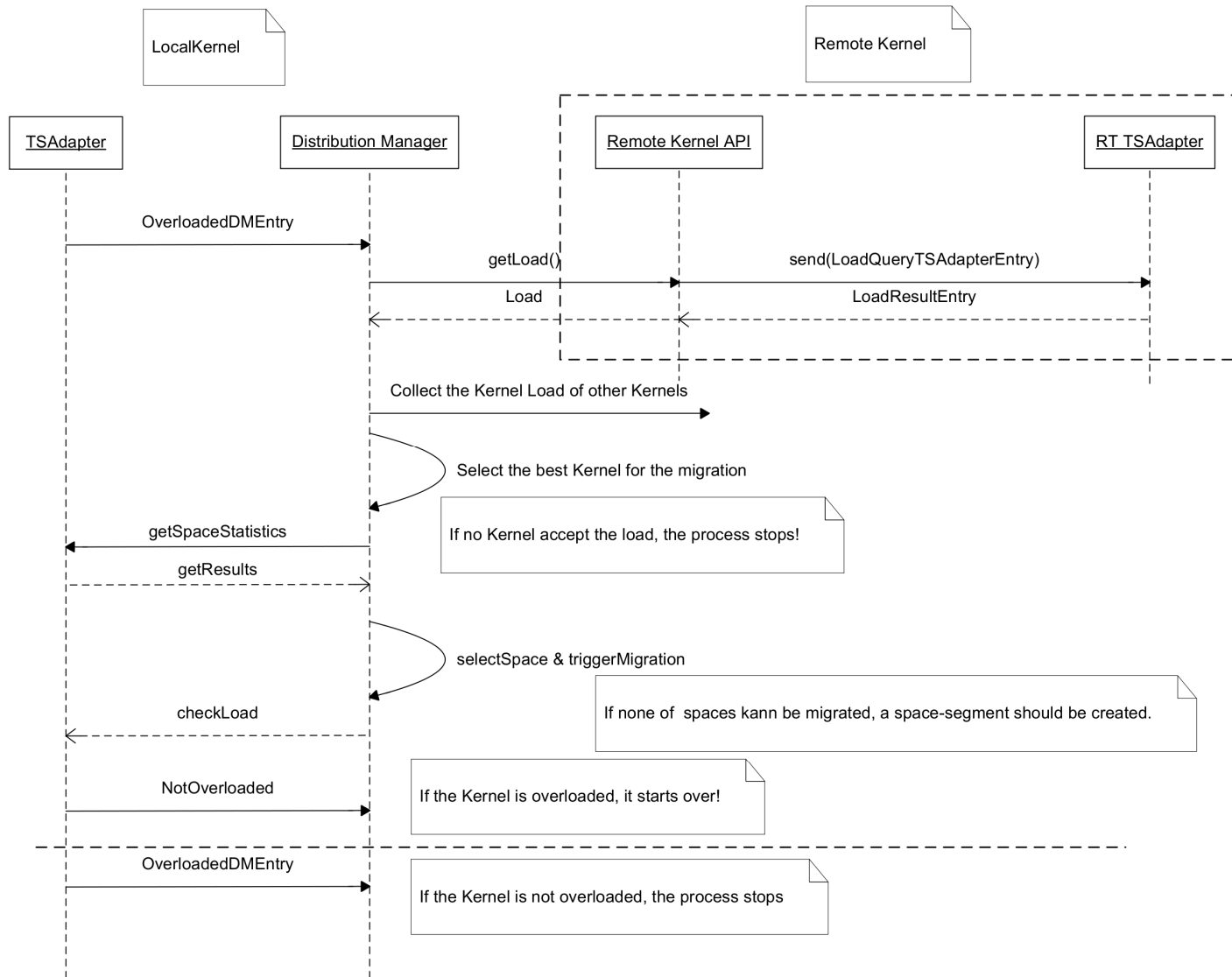
Migrate operation



MigrateRequest operation



Collecting kernel load



End of Document